



y a n u s z   g i l e w i c z  
*“the evolution of da Vinci’s artwork into the fourth dimension”*

w w w . f i n i s h i n g d a v i n c i . c o m

General Presentation of YFA Inc. art work.  
2012.

## yanusz

Gilewicz challenges us with his most recent revolutionary vision, which marries painting and sculpture along with the natural elements.

The outcome here is where his art is progressively exposed (like a photographic plate) by moving the light source, the viewer becomes more engaged, as they witness a transformative image. The actual effect is a gradual metamorphosis where the raw elements become partnered with a light apparatus, (Invented by Mark Ellison) that will power the painted and textured image to visually shift in an unprecedented way, all in real time.



## 4 4D art

### Light Moving Sculpted Painting

To perfect 3D painting , I applied renaissance techniques, chiaro-scuro and sfumato on 3D sculpted texture.

In process, I discovered that by moving the light source over the work, the image would appear and disappear.

This revelation prompted me to design a moving Light Apparatus which reveals the transformative aspects of movement in real time so the viewer will interact with the work in an unprecedented way.

### Surface and Paint

#### In 4D art, surface is a vital component

In conjunction with the painting and light source, the surface reveals and hides realistic images. The secret is to find the perfect balance between those elements.

When that happens, an extraordinary phenomena in art manifests—the form becomes a void and the void becomes form interlocked in real time. For the best results, the surface has to appear completely natural, effortless, chaotic and wild like nature itself.

Symmetry, predictability and/or machine-made look is completely contrary to the purpose and function of 4D art.

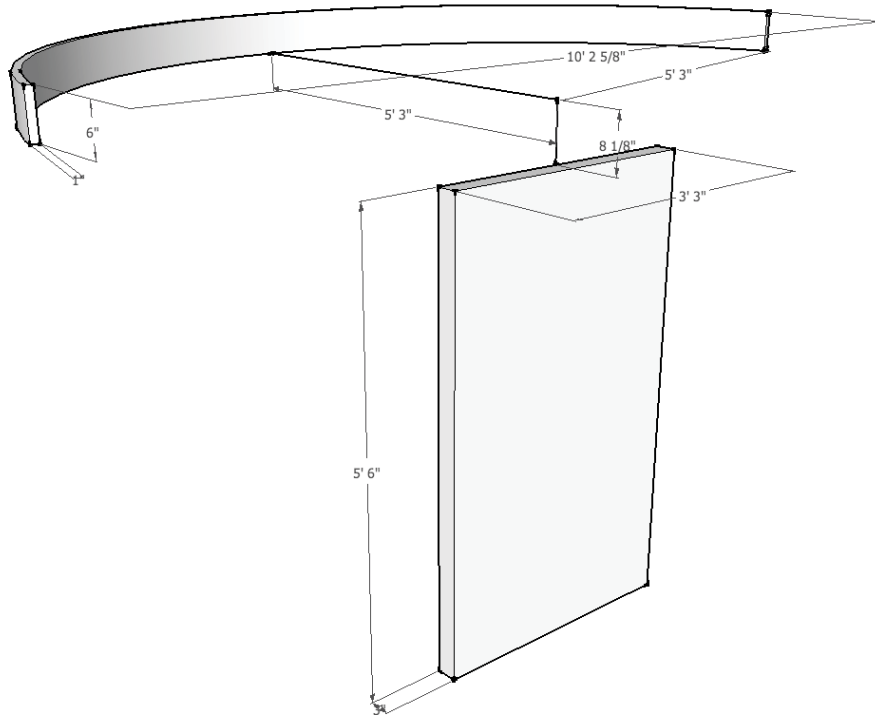
Sophia Revelation of Light: oil painting on mix-media sculpture. It is durable and its color and shape will not change over the span of many lifetimes.

#### Surface options and paint

4D art can be executed on almost any surface including metal, wood, plaster, stone, fiber glass, resins, polyesters, paper or fabrics.

#### Paints for 4D art

Depending on material could be: oil paints, metallic, resins, acrylics and fabric paints.



## Light Source for Sophia

Light Apparatus is a machine designed by Yanusz and invented by Mark Ellison.

It powers the painted and textured image to visually shift. It has an art light projector inside the head which moves on half circle track at a uniform speed bouncing from east to west without interruption.

It is powered by electricity and can be used continuously. It mimics the movement of the planet in our solar system and it is consistent with the principles of universal laws. Ellison's light apparatus hails directly from Da Vinci's workshop. The effect of this moving light creates the illusion of the sun's passage from day to night .

## **Light source options**

### **Natural light**

Sunlight or moon light (zero maintenance). Our highest recommendation, artwork has to be displayed in outdoors setting or close to large windows. Installation is minimal.

### **LCD lights**

Installed on aluminum or stainless steel track (low maintenance and ease of installation).

### **Robotic lights**

Electrically motor controlled light head moving on a build track (high maintenance, installation and service).

### **Theatrical lights**

Theatre type light head with electrically controlled arm unit attached from the ceiling with counter-balance weight. Light head on aluminum or stainless steel arm (medium maintenance).



yanusz gilewicz

## 8 sophia

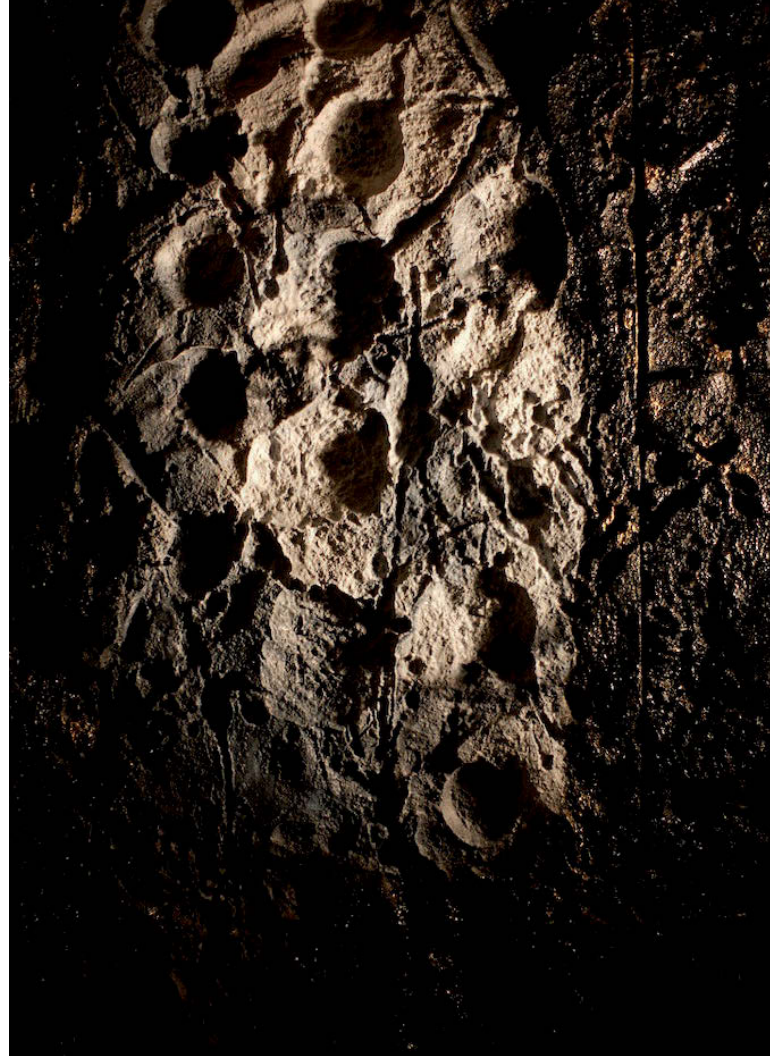
### **Sophia Revelation of Light** **Oil on mixed-media board**

Size: 66"x 39"

Set up time for installation with Light Apparatus.  
Depending on the space where the art installed, it  
could take up two weeks.

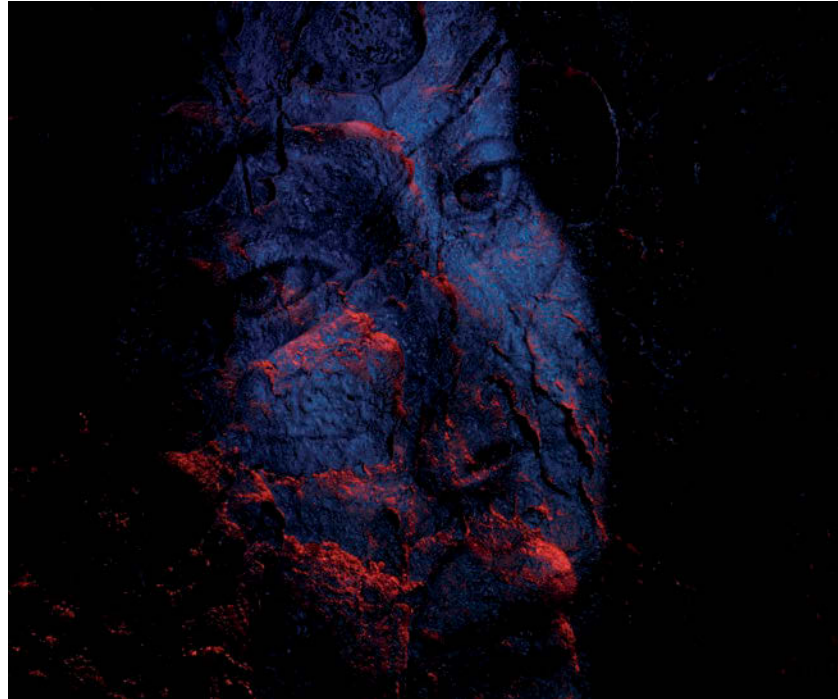
Sophia is available here and now.

Custom projects can be done at client request.





*“Gilewicz’s paintings are in collections of rock stars, prime ministers, and the late Pope John Paul II.”*



Sophia 3D

Quote from article  
by Deborah Medenbach  
Times Herald Record  
5/26/05

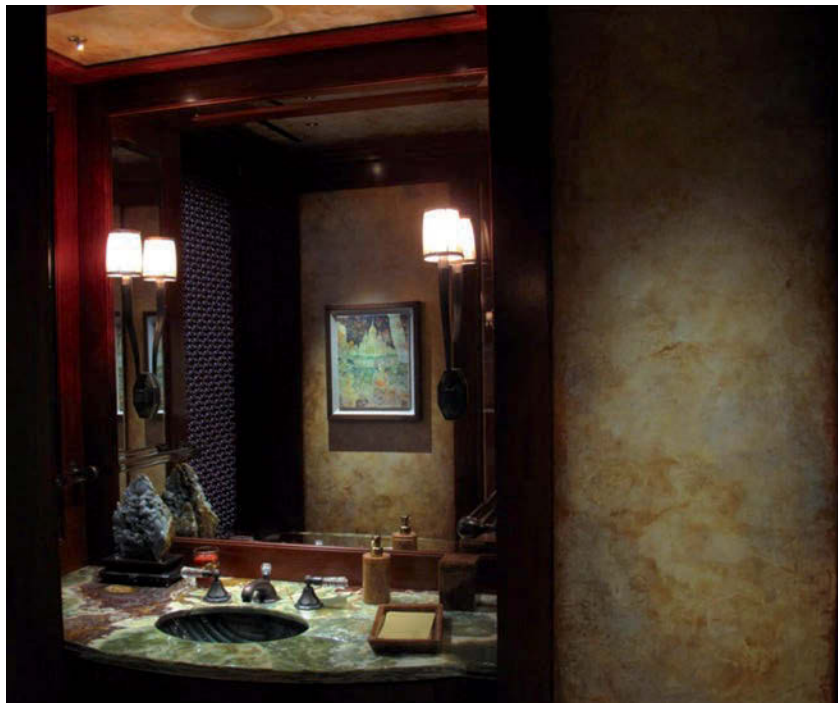
*“the evolution of da Vinci’s artwork into the fourth dimension”*

*“Yanusz’s work is magic. It goes beyond anything I have seen. I feel privileged to work with Yanusz.”*



Samuel Botero, acclaimed interior designer. Architectural Digest’s Top 100 architects and interior designers.

*“Everyone who comes to the  
apartment is in awe of your work.”*



Thank you note from  
Shelley Rubin co-founder  
Rubin Museum of Art.

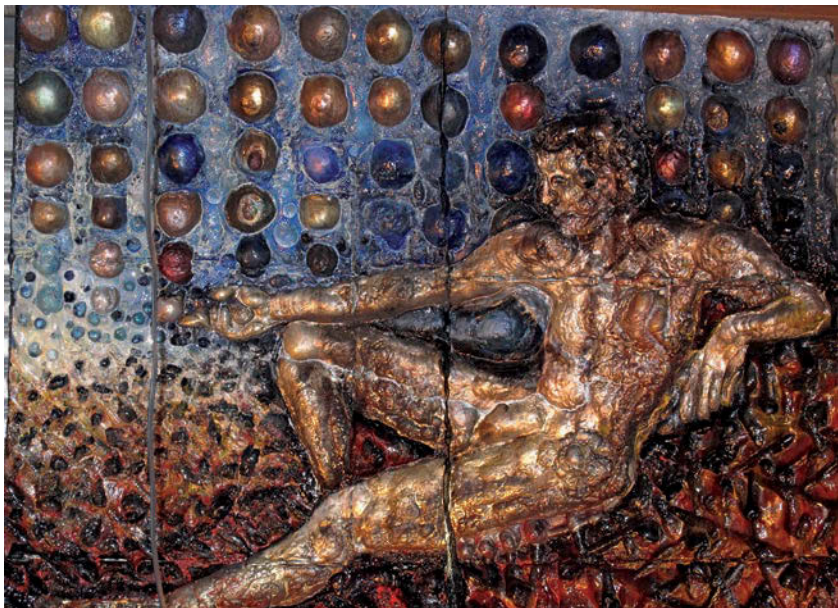
*“the evolution of da Vinci’s artwork into the fourth dimension”*

*“I would be hard pressed to name another artist who is able to match Yanusz’s talent and level of experience and execution.”*



Quote from Thomas Britt,  
member of Interior Design  
Magazine’s Hall of Fame

14 **other work**



“Creation of Atom”  
60”x48”



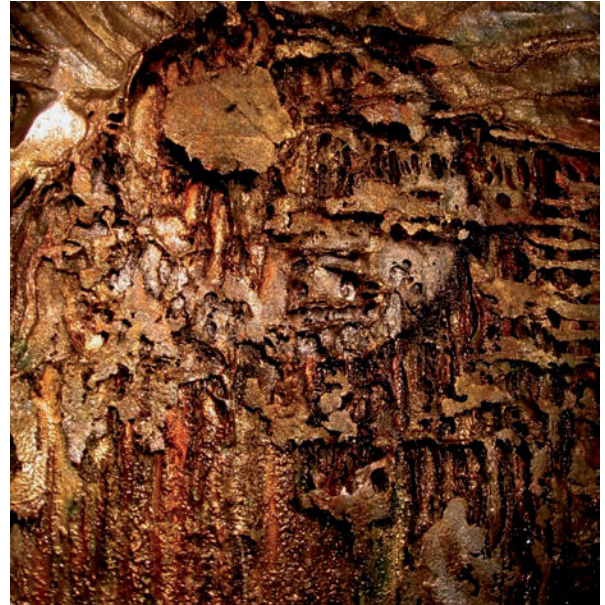
“Black Madonna”  
52”x48”

*“the evolution of da Vinci’s artwork into the fourth dimension”*

15



“Three Graces”  
84”x66”



“The Circle”  
78”x62”

## team members

(Bios available upon request)

### **Yanusz Gilewicz.**

Artist, founder of 4D art, inventor.

yanuszg@yahoo.com  
001 646 724 3539  
www.finishingdavinci.com

---

### **Casimir Trzewik.**

Technical support

casimirdesign@gmail.com  
001 845 616 0872  
www.casimirdesign.com

---

### **Mark Ellison.**

Light designer

DE-TECH'ed Builders Inc.  
001 347 924 1068  
ellisonmark400@gmail.com

## **commercial clients**

Thomas Britt Inc., New York, NY.  
Samuel Botero Inc., New York, NY.  
Rubin Museum of Art, New York, NY.  
Barney’s, New York, NY.  
Better Music, New York, NY.  
Buttermilk Falls Inn & Spa, Milton, NY.  
Harper Collins Publisher, New York, NY.  
Great Jones Spa, New York, NY.  
Jivamukti Yoga Center, New York, NY.  
Gallery P.A.C., Sapporo, Japan.  
Itochu Gallery, Tokyo, Japan.  
Seibu Corp., Tokyo, Japan.  
Sheridan Corp., Sydney, Australia.  
Vatican City, Rome, Italy.  
Cinecitta Film Studios, Rome, Italy.

## **private clients**

Shelley and Donald Rubin, New York.  
Steve Tananbaum, Purchase, NY.  
Connie Millstain, New York, NY.  
Baldev Duggal, New York, NY.  
David Bowie, New York, NY.  
Eric Clapton, New York, NY.  
Joe Cocker, Los Angeles, Ca.  
Michael Lang, New York, NY.  
Moby, New York, NY.  
Iggy Pop, New York, NY.  
Slash, Los Angeles, Ca.  
Sting and Trudie Styler, New York, NY.  
Kansai Yamamoto, Tokyo, Japan.  
Pope John Paul II, Vatican, Rome, Italy.

w w w . f i n i s h i n g d a v i n c i . c o m

© Barcelona Photographer  
Graphic Design: Beatriz Schulze. Cover photography: Katherin Vermke.